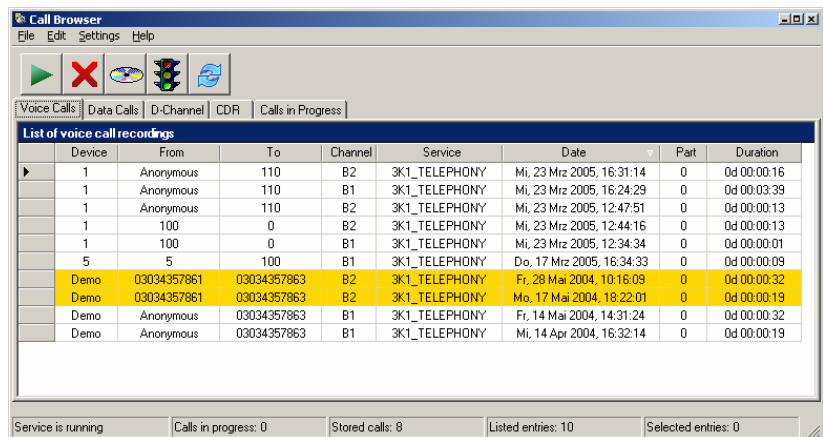


Product Overview---MT Y-EYE VOICE RECORDER



MTY EYE USB devices are small, easy to use and can be quickly connected to a computer and a telephone line or PBX. Multiple devices can be operated with a single computer and are integrated into one software application. The software offers the ability to listen in to current calls. Filter expressions (called and calling party numbers, date and time, duration of the call, call origination) can be used to define which calls should be recorded.

Recorded calls are stored on hard disk as WAV files (supported formats: G.711, GSM, MP3) and can optionally be encrypted. It is possible to record only local or remote party. The Duration of recording depends on hard disk size - (40 GB are sufficient for 680 hours of G.711 stereo or 7340 hours of GSM mono).



MTY EYE USB devices can be connected to every telephone system compatible with the ISDN protocols DSS1/Q.931 or DASS2 as well as analogue lines. The devices record data of both B- and D-channels for protocol analysis with Ethereal. ISDN lines can be tested and monitored using an MTY EYE USB device. Call related data such as called and calling party numbers, exact date and time as well as duration of the call are stored. Every device package includes an MTY EYE USB device, the recording software, a manual and USB-, ISDN or telephone cables. All MTY EYE USB products can be delivered from stock.

Device Type	Line Type	USB Connection	Number of recorded channels
MTY EYE USB-S0	1x ISDN2	external	2
MTY EYE USB-4S	4x ISDN2	internal	8
MTY EYE USB-4Bx**	4x ISDN2	external	8
MTY EYE USB-E1	1x ISDN30	external	30
MTY EYE USB-A2	2x analogue	external	2
MTY EYE USB-A8**	8x analogue	external	8

**** NEW** Standalone package for 4 BxSo and A8 Bx