



C8-100  
C12-100  
C16-100  
C20-100

## rackmount Multi TAP

Designed for the regular Ethernet and Industrial Ethernet the ProfitAP™ offers the most complete and cost effective measurement solution for the Field Service Engineer:

Full Duplex, Fast Ethernet Monitoring for Time & Telegram Analysis at Real Time Ethernet

Standard Ethernet

Industrial Ethernet

10/100 UTP



available models:

**C8-100** : 8 single Taps functions

**C12-100** : 12 single Taps functions

**C16-100** : 16 single Taps functions

**C20-100** : 20 single Taps functions

The 100BaseT UTP Multi TAP avoids downtime in your 10/100BaseT networks. It is invisible to the network and forwards IEEE 802.3af power (PoE) between the connected network devices.

Once in place it monitors full and half duplex communication and move test equipment without breaking the circuit.

It mirrors any packet size, bad CRC, VLAN traffic and sees both ends of full-duplex links.

The C8,C12,C16 and C20 is a Multi - 10BaseT/ 100BaseTX Tap for half/full duplex Ethernet networks.

The „no package loss“ and redundant power feature makes it ideal for security applications.

Network ports A and B are hardware wired together. One unit fit in a 1U 19 inch rack space.

It has all In and Out Ports on the backside and all Monitorports on the front

- *Up 20 single TAPs in 1U rackspace unit*
- *non intrusive In-Line Monitoring*
- *permanent Network Link guaranteed*
- *bypass data on power failure*
- *monitoring for all Protocol Levels*
- *802.3af & VoIP compliant.*
- *no Package Loss*
- *Indicators for Link Activity & Power*
- *works at 100mtrs distance*
- *galvanic separation for maximum protection*
- *rackmount*
- *redundant powered*

**Cx-100** offers a galvanic separation from the Network and protects your Analyzer from PoE and Ground Potential Differences and is fully 802.3af & VoIP compliant.

# PROFITAP

- C8-100
- C12-100
- C16-100
- C20-100

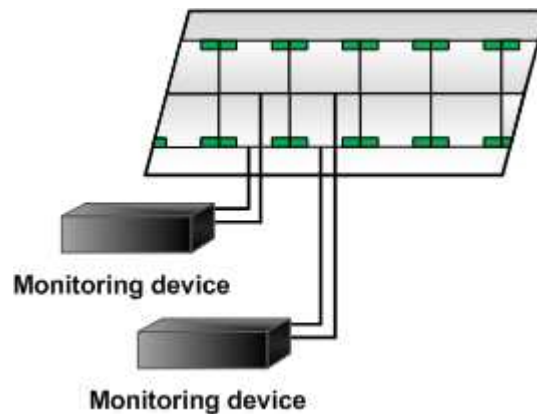
### Professional analysis require dedicated hardware...

The ProfitAP Cx-100 is a straight forward solution. In-Line it sees and monitors all 7 protocol layers. While installed in the link it is invisible to the network and does not interfere in auto negotiation / speed or duplex settings.

### general application:

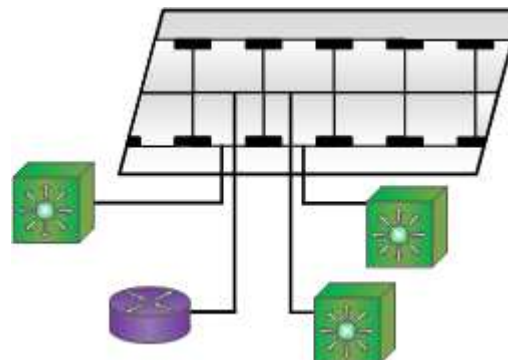
Frontside :

8 to 20 \* MONITOR OUT ( TX + RX):



Backside:

8 to 20 \* LINE IN ( TX+ RX):  
8 to 20 \* LINE OUT (TX + RX):



### Specification:

- 1U unit metal housing, black oven painted
- 2x 8 up to 20 RJ45, 8 pin
- Power : 90-240V, 50-60Hz
- Powerconsumption appr. 12 to 20 VAC
- Operating Temperature : 0°C to 50°C
- Storage Temperature : -10°C to 80°C
- Humidity : 10% to 90%, none condensing

### Weight& Size:

Main unit 44x162x44 cm (WxDxH), 1,6 to 2,2kg.  
Frontpanel Dimension 48,3cm (W)

for costumer/sales/support worldwide contact:



+49 (0) 69 936 23 897  
+49 (0) 69 3640 8925

sales@profitap.com www.profitap.com

your local partner: